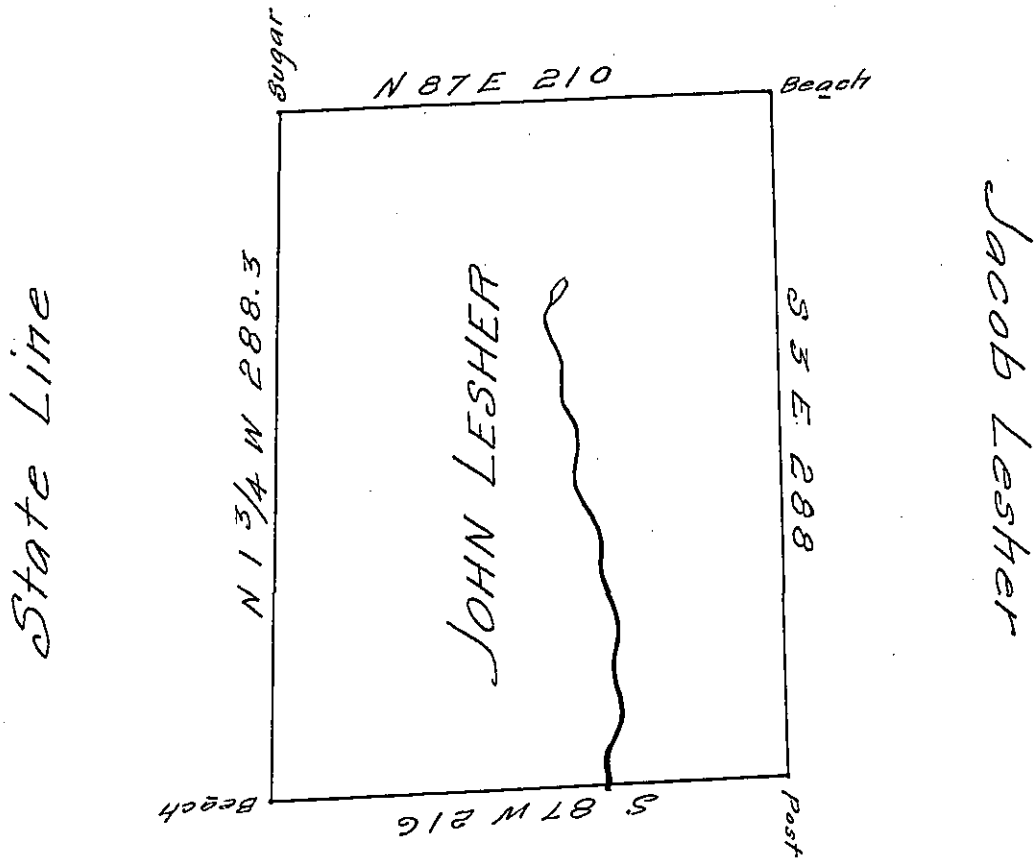


George Lester



Samuel May

Situate on the Waters of big Beaver
 Creek in district N: 3 Allegany County
 Containing Three hundred and Sixty one
 Acres, One hundred and thirty three perch-
 es and the allowance Survey'd 3-day of
 June 1796 in pursuance of a Warrant grant-
 ed John Lester 21 April 1794

Ben. Stokely D.S.

Dan! Brodhead Esq. S.G.

IN TESTIMONY that the above is a copy of the original remaining on file in
 the Department of Internal Affairs of Pennsylvania, made
 conformably to an Act of Assembly approved the 16th day of
 February, 1833, I have hereunto set my Hand and caused
 the Seal of said Department to be affixed at Harrisburg,
 this tenth day of October 1906

Loac P. Brown
 Secretary of Internal Affairs